

RECEIVED: 23/10/2025

Contents

Introduction.....	12-1
Background.....	12-1
Scope of Work / Methodology.....	12-1
Contributors / Author(s).....	12-3
Limitations / Difficulties Encountered.....	12-4
Regulatory Background.....	12-4
Legislation.....	12-4
Planning Policy and Development Control.....	12-4
Architecture and Protected Structures.....	12-4
Archaeological Heritage.....	12-7
Guidelines.....	12-8
Significant Risks.....	12-8
Receiving Environment.....	12-9
Study Area.....	12-9
Baseline Study Methodology.....	12-9
Paper Study.....	12-9
The Record of Monuments and Places.....	12-9
Cartographic Sources.....	12-9
The County Development Plan.....	12-9
Field assessment.....	12-9
Receiving Environment, Historical and Archaeological Landscape.....	12-10
The Landscape.....	12-10
Historical and Archaeological Background.....	12-10
The Prehistoric Period.....	12-10
The Medieval Period.....	12-10
The Post-Medieval Period.....	12-11
Buildings.....	12-11
Designated Structures.....	12-11
Archaeology.....	12-11
Archaeological Assessment.....	12-11
Monuments.....	12-11
Cartographic Sources.....	12-11
Place Name Evidence.....	12-11

RECEIVED: 23/10/2025

National Museum of Ireland	12-12
Archaeological investigations in the study area	12-12
Offaly Development Plan 2017-23	12-12
Aerial Photographs	12-12
Field Inspection	12-12
Assessment Of Potential Impacts	12-13
Direct Effects	12-13
Indirect Effects	12-13
Interactions with Other Effects	12-13
Do Nothing Effects	12-13
Worst Case Impact	12-13
Cumulative Effects	12-13
Recommendations / Proposed Mitigation Measures	12-13
Direct Effects	12-13
Indirect Effects	12-13
References	

Figures

Figure 12-1: The Study Area

Plates

- Plate 12-1: Aerial image of the application area taken
- Plate 12-2: Drone view of the application area looking north.
- Plate 12-3: Drone view of Area 1 looking east.
- Plate 12-4: Drone view of Area 2 looking east.
- Plate 12-5: Drone view of Area 3 looking north.

Appendices

Appendix 12-A Sites in the Record of Monuments and Places and the Sites and Monuments Record

RECEIVED: 23/09/2025

Introduction

Background

- 12.1 This Chapter of the Environmental Impact Assessment Report (EIAR), commissioned by SLR Consulting Ireland on behalf of BD Flood Ltd., addresses the impacts on the archaeological, architectural and cultural heritage of the application site and the surrounding area of a proposal to develop a sand and gravel pit in Derryarkin townland, Co. Offaly. The site location and study area are indicated in **Figure 12-1**.
- 12.2 The proposed development being applied for under this planning application will consist of:
- An overall application area of c. 19.5 hectares;
 - Phased extraction of sand and gravel (wet working) over an area of c. 11.7 hectares with processing that includes crushing and screening and all ancillary works and structures;
 - Provision of new site facilities to include wheelwash (c. 35m²), weighbridge (c. 69m²); mobile welfare pod facility (c. 16m²) consisting of office, canteen, toilet and drying room; dedicated parking area, perimeter vegetation planting and fencing.
 - Access to the site will be via an existing entrance onto the local access road to the north of the site;
 - Progressive restoration of the site to naturally regenerated wildlife habitat and a permanent water body;
 - The proposed development life is for 15 years to complete extraction and restoration operations.

Scope of Work / Methodology

- 12.3 This study which complies with the requirements of Directive EIA 2014/52/EU is an assessment of the known or potential cultural heritage resource within a specified area and includes the information that may reasonably be required for reaching a reasoned conclusion on the significant effects of the project on the environment, taking into account current knowledge and methods of assessment. It consists of a collation of existing written and graphic information in order to identify the likely context, character, significance and sensitivity of the known or potential cultural heritage, archaeological and structural resource using an appropriate methodology (EPA 2002, 2003 and 2022).
- 12.4 The criteria and definitions for describing effects set out below are drawn from the 2022 EPA Guidelines.

Quality of Effects	Positive A change which improves the quality of the environment.
	Neutral No effects or effects that are imperceptible, within normal bounds of variation or within the margin of forecasting error.
	Negative/adverse Effects A change which reduces the quality of the environment.
Significance of effects	Imperceptible An effect capable of measurement but without noticeable consequences.

	Not significant An effect which causes noticeable changes in the character of the environment but without noticeable consequences.
	Slight effects An effect which causes noticeable changes in the character of the environment without affecting its sensitivities.
	Moderate effects An effect that alters the character of the environment in a manner that is consistent with existing and emerging trends.
	Significant effects An effect which, by its character, magnitude, duration or intensity alters a sensitive aspect of the environment.
	Very Significant effects An effect which, by its character, magnitude, duration or intensity significantly alters the majority of a sensitive aspect of the environment.
	profound effects An effect which obliterates sensitive characteristics
Describing the extent and context of effects	Extent Describe the size of the area, the number of sites, and the proportion of population affected by an effect.
	Context Describe whether the extent, duration, or frequency will conform or contrast with established (baseline) conditions.
Describing the Probability of effects	Likely effects The effects can reasonably be expected to occur because of the planned project if all mitigation measures are properly implemented.
	Unlikely effects The effects can reasonably be expected not to occur because of the planned project if all mitigation measures are properly implemented.
Describing the duration and frequency of effects	Momentary effects Effects lasting from seconds to minutes.
	Brief effects Effects lasting less than a day.
	Temporary effects Effects lasting less than a year.
	Short-term effects Effects lasting one to seven years.
	Short-term effects Effects lasting seven to fifteen years.
	Long term-term effects Effects lasting fifteen to sixty years.
	Permanent effects Effects lasting over sixty years.
Reversible effects	

RECEIVED: 23/10/2025

	Effects that can be undone, for example through remediation or restoration.
	Frequency of effects Describe how the effect will occur.
Describing the types of effects	Indirect effects Impacts on the environment which are not a direct result of the project.
	Cumulative effects The addition of minor or significant effects, including effects of other projects, to create a larger more significant effect.
	'Do-Nothing Effects' The environment as it would be in the future should the project not be carried out.
	'Worst case' effects The effects arising from a project in the case where mitigation measures substantially fail.
	Indeterminable effects When the full consequences of a change in the environment cannot be described.
	Irreversible effects When the character distinctiveness, diversity or reproductive capacity of an environment is permanently lost.
	Residual effects The degree of environmental change that will, occur after the proposed mitigation measures take effect.
	Synergistic effects Where the resultant effect is of greater significance than the sum of its constituents.

- 12.5 The study involved detailed investigation of the archaeological and historical background of the development site, the landholding and the surrounding area extending 1km from the development boundary (**Figure 12-1**). This area was examined using information from the Record of Monuments and Places of County Offaly; the Offaly County Development Plan; lists of excavations and cartographic and documentary sources. A field inspection was carried out to identify and assess any known archaeological sites and previously unrecorded features and portable finds within the area of landholding.
- 12.6 An impact assessment and mitigation strategy have been prepared. An impact assessment is undertaken to outline potential adverse impacts that the proposed development may have on the cultural resource, while a mitigation strategy is designed to avoid, reduce or offset such adverse impacts.
- 12.7 The application site is in the townland of Derryarkin, Co. Offaly, on OS Six Inch sheet No. 3, to the southwest of the R400 regional road and c.4.6km to the southeast of the town of Rochfortbridge. The proposed application area is c. 19.5ha in extent.
- 12.8 Extracts from the Record of Monuments and Places for County Offaly and the Sites and Monuments Record are presented on a map of the local area around the site in **Figure 12-1**. The application area is shown in red.

Contributors / Author(s)

- 12.9 The assessment was prepared by Dr. Charles Mount who is a member of the Institute of Archaeologists of Ireland and a former member of the Discovery Programme and has more than thirty years of cultural heritage assessment experience. He holds M.A. and Ph.D. degrees in archaeology as well as a professional diploma in EIA and SEA Management.

Limitations / Difficulties Encountered

- 12.10 No difficulties were encountered during the desktop study, field inspection or in the preparation of this report.

Regulatory Background

- 12.11 The following paragraphs set out the regulatory background regarding cultural impact assessments in Ireland in general and the site-specific planning background relevant to this cultural impact assessment.

Legislation

- 12.12 No specific Irish legislation exists governing cultural heritage assessments.

Planning Policy and Development Control

- 12.13 The Co. Offaly Development Plan 2021-2027 (CDP) is the statutory plan detailing the development objectives/policies of the Local Authority. The plan includes objectives and policies, relevant to this assessment, i.e. regarding cultural heritage.

Architecture and Protected Structures

- 12.14 There are several policies outlined in Section 10.11 of the plan in respect of Architectural Heritage which state:

Protected Structures

- 12.15 **BHP-01** *It is Council policy to ensure the protection, sympathetic and sensitive modification, alteration, extension or reuse of protected structures or parts of protected structures, and the immediate surrounds included and proposed for inclusion in the Record of Protected Structures that are of special architectural, historical, archaeological, artistic, cultural, scientific, social or technical interest, together with the integrity of their character and setting.*
- 12.16 **BHP-02** *It is Council policy to ensure the protection of the curtilage of protected structures or proposed protected structures and to prohibit inappropriate development within the curtilage or attendant grounds of a protected structure which would adversely impact on the special character of the protected structure including cause loss of or damage to the special character of the protected structure and loss of or damage to, any structures of architectural heritage value within the curtilage of the protected structure.*
- 12.17 **BHP-03** *It is Council policy to promote best practice and the use of skilled specialist practitioners in the conservation of, and any works to, protected structures. Method statements should make reference to the Department of Culture, Heritage and the Gaeltacht's Advice Series on how best to repair and maintain historic buildings.*
- 12.18 **BHP-04** *It is Council policy to favourably consider the change of use of any structure included on the Record of Protected Structures provided such a change of use does not adversely impact on its intrinsic character and is in accordance with the proper planning and sustainable development of the area.*
- 12.19 **BHP-05** *It is Council policy to actively encourage uses that are compatible with the character of protected structures.*
- 12.20 **BHP-06** *It is Council policy to retain where practicable a protected structure which has been damaged by fire, and to retain those elements of that structure that have survived (either in whole or in part) and that contribute to its special interest.*

- 12.21 **BHP-07** It is Council policy to prohibit the demolition of any protected structure unless the Council is satisfied that exceptional circumstances exist. The demolition of a protected structure with the retention of its façade will likewise not generally be permitted.
- 12.22 **BHP-08** It is Council policy to require an Architectural Heritage Assessment Report, as described in Appendix B of the Architectural Heritage Protection, Guidelines for Planning Authorities, Department of Culture, Heritage and the Gaeltacht (2013), to accompany all applications involving a protected structure.
- 12.23 **BHP-09** It is Council policy to advise owners of protected structures in preparation of funding applications under Built Heritage Scheme of the Historic Structures Fund.
- 12.24 **BHP-10** It is Council policy to ensure that in the event of a planning application being granted for development within the curtilage of a protected structure, the proposed works to the protected structure should occur, where appropriate, in the first phase of the development to prevent endangerment, abandonment and dereliction of the structure.
- 12.25 **BHP-11** It is Council policy to ensure that measures to upgrade the energy efficiency of Protected Structures and historic buildings are sensitive to traditional construction methods and materials and do not have a detrimental physical, aesthetic or visual impact on the structure. They should follow the principles and direction given in the Department of Arts, Heritage and the Gaeltacht's publication Energy Efficiency in Traditional Buildings.

Architectural Conservation Areas

- 12.26 **BHP-12** It is Council policy to encourage the retention of original windows, doors, renders, roof coverings, street furniture and other significant features of historic buildings and landscape features within Architectural Conservation Areas.
- 12.27 **BHP-13** It is Council policy to proactively promote conservation through the Planning and Development Act 2000 (as amended), the Built Heritage Investment Scheme and other schemes available to the Council.
- 12.28 **BHP-14** It is Council policy to preserve the character of Geashill Architectural Conservation Area (ACA) and any future ACA's in County Offaly by ensuring that any new development within or contiguous to the ACA is sympathetic to the character of the area and that the design is appropriate in terms of scale, height, plot density, layout, materials and finishes having regard to the advice given in the Statements of Character for each area.

Vernacular Buildings

- 12.29 **BHP-15** It is Council policy to encourage the protection, retention, appreciation and appropriate revitalisation of the vernacular heritage of Offaly.
- 12.30 **BHP-16** It is Council policy to consider the guidance in "The Thatched Houses of Kildare" and "Reusing Farm Buildings, A Kildare Perspective" published by Kildare County Council in assessing planning applications in County Offaly relating to thatched cottages and traditional farm buildings.
- 12.31 **BHP-17** It is Council policy to preserve the character and setting (for example, gates, gate piers and courtyards) of vernacular buildings where deemed appropriate by the planning authority.
- 12.32 **BHP-18** It is Council policy to seek the repair and retention of traditional timber and/or rendered shop fronts and pub fronts, including those that may not be protected structures.
- 12.33 **BHP-19** It is Council policy to communicate and work with owners of thatch buildings regarding the availability of conservation grants and funding.

- 12.34 **BHP-20** *It is Council policy to encourage where appropriate the covering of thatch with metal, as a measure for the protection of buildings which are unoccupied and showing signs of considerable distress.*
- 12.35 **BHP-21** *It is Council policy to support proposals to refurbish vernacular structures that are in a run down or derelict condition, provided that;*
- *Appropriate traditional building materials and methods are used to carry out repairs to the historic fabric; and*
 - *Proposals for extensions to vernacular structures are reflective and proportionate to the existing building and do not erode the setting and design qualities of the original structure which make it attractive.*

Industrial Heritage

- 12.36 **BHP-22** *It is Council policy to protect the industrial heritage of Offaly, including mills, historic industrial buildings, canals and historic bridges.*
- 12.37 **BHP-23** *It is Council policy to utilise the information provided within Mills of County Offaly: An Industrial Heritage Survey (2009) when assessing development proposals for surviving industrial heritage sites.*
- 12.38 **BHP-24** *It is Council policy to protect and enhance the built and natural heritage of the Grand Canal and ensure that development within its vicinity is sensitively designed and does not have a detrimental effect on the character of the canal, its built elements and its natural heritage values and that it adheres to the Waterways Ireland's Heritage Plan 2016-2020.*
- 12.39 **BHP-25** *It is Council policy to encourage appropriate change of use and reuse of industrial buildings, provided such a change does not seriously impact on the intrinsic character of the structure and that all works are carried out in accordance with best conservation practice.*
- 12.40 **BHP-26** *It is Council policy to seek the retention and appropriate repair/maintenance of the historic bridges and harbours of the county whether they are protected structures or not.*
- 12.41 **BHP-27** *It is Council policy to restrict vehicular access onto public roads that were formerly towpaths and any development permitted with access off a towpath must be screened effectively with trees and hedging. In relation to planning applications for housing in the open countryside with access proposed off towpaths, applicants must demonstrate compliance with Policy SSP-27 as towpaths are located within Natural Heritage Areas and Areas of High Amenity.*

Country Houses, Gardens and Demesnes

- 12.42 **BHP-28** *It is Council policy to encourage the protection, conservation, promotion and enhancement of Country Houses, Gardens and Demesnes in the county and support public awareness, enjoyment of and access to these sites where appropriate.*
- 12.43 **BHP-29** *It is Council policy to encourage the conservation, preservation, restoration and protection in their original setting of mausoleums and monuments: follies, grottoes; garden buildings and other structures of particular beauty or historic, environmental, architectural or industrial significance.*
- 12.44 **BHP-30** *It is Council policy to discourage development that would lead to a loss of, or cause damage to, the character, the principle components of, or the setting of Country Houses, Gardens and Demesnes.*
- 12.45 **BHP-31** *It is Council policy to consider the "Guidance Notes for the Appraisal of Historic Gardens, Demesnes, Estates and their Settings" published by Cork County Council 2006 in the appraisal and description of the impacts of proposed developments in County Offaly*

within or in close proximity to country houses and demesnes on historic designed landscapes, demesnes and gardens.

Protected Species

- 12.46 **BHP-32** *It is Council policy to protect habitats and species when considering proposed works to buildings and structures which are likely to impact on protected ecological sites and protected species.*

Archaeological Heritage

- 12.47 There are several policy objectives outlined in Section 10.11 of the plan in respect of Archaeological Heritage which state:

Archaeological Heritage

- 12.48 **BHP-33** *It is Council policy to support and promote the protection and appropriate management and sympathetic enhancement of the county's archaeological heritage within the Plan area, in particular by implementing the Planning and Development Act 2000 (as amended) and the National Monuments Act 1930 (as amended).*
- 12.49 **BHP-34** *It is Council policy to seek to promote awareness of and access to archaeological sites in the county where appropriate.*
- 12.50 **BHP-35** *It is Council policy to consult with the National Monuments Service of the Department of Culture, Heritage and the Gaeltacht (DCHG) in relation to archaeological sites within and/or adjoining a proposed development.*
- 12.51 **BHP-36** *It is Council policy to facilitate the identification of important archaeological landscapes in the county.*
- 12.52 **BHP-37** *It is Council policy that any development that may, due to its size, location or nature, have implications for archaeological heritage (including both sites and areas of archaeological potential / significance) shall be subject to an archaeological assessment. When dealing with proposals for development that would impact upon archaeological sites and/or features, there will be presumption in favour of the 'preservation in situ' of archaeological remains and settings, in accordance with Government policy. Where permission for such proposals is granted, the Planning Authority will require the developer to have the site works supervised by a licenced archaeologist.*
- 12.53 **BHP-38** *It is Council policy to ensure that archaeological excavation is carried out according to best practice as outlined by the National Monuments Service, Department of Culture, Heritage and the Gaeltacht, the National Museum of Ireland and the Institute of Archaeologists of Ireland and to protect previously unknown archaeological sites and features, where they are discovered during development works.*
- 12.54 **BHP-39** *It is Council policy to ensure the protection and preservation of underwater and terrestrial archaeological sites, both known and potential in riverine or lacustrine locations including wrecks such as the remains of bridges.*
- 12.55 **BHP-40** *It is Council policy to require archaeological assessment, including underwater archaeological assessment where relevant, for such developments that due to their location, size or nature may have implications for archaeological heritage. Such developments include those that are located at or close to an archaeological monument or site, those that are extensive in terms of area (0.5 hectares or more) or length (1 kilometre or more and developments that require an Environmental Impact Statement.*

Monastic Sites

- 12.56 **BHP-41** *It is Council policy to retain the nominated status of the area comprising the National Monument at Clonmacnoise, enclosing eskers, Mongans Bog, Clonmacnoise callows, Fin Lough and the limestone pavement at Clorhane as the “Clonmacnoise Heritage Zone” in accordance with the recommendations of the study of the area carried out by the Environmental Sciences Unit of Trinity College, Dublin as shown in Figure 10.7 of this Plan.*
- 12.57 **BHP-42** *It is Council policy to investigate the potential of Durrow Demesne as a public amenity and tourism asset.*
- 12.58 **BHP-43** *It is Council policy to support and promote the protection and appropriate management of all monastic sites in the county.*

Mass Rocks and Holy Wells

- 12.59 **BHP-44** *It is Council policy to preserve, protect and, where necessary, enhance mass rocks and holy wells in the County.*

Historic Military Fortifications and Castle Sites

- 12.60 **BHP-45** *It is Council policy to support and promote the protection and appropriate management of historic military fortifications and castle sites in the county.*

Funding

- 12.61 **BHP-46** *It is Council policy to support the progression and delivery of projects that repair and conserve historic structures under the Historic Structures Fund, the Built Heritage Investment Scheme or other funding schemes as applicable.*

Community Archaeology

- 12.62 **BHP-47** *It is the policy of the Council to support the concept of Community Archaeology and greater collaboration in promoting awareness, knowledge and understanding of local archaeological resources in County Offaly*
- 12.63 **BHP-31** *It is Council policy to consider the “Guidance Notes for the Appraisal of Historic Gardens, Demesnes, Estates and their Settings” published by Cork County Council 2006 in the appraisal and description of the impacts of proposed developments in County Offaly within or in close proximity to country houses and demesnes on historic designed landscapes, demesnes and gardens.*

Guidelines

- 12.64 The report format and some of the descriptions of effects are based on the **Guidelines on the Information to be contained in Environmental Impact Assessment Reports**, published by the Environmental Protection Agency in 2022.

Significant Risks

- 12.65 There are no known significant risks to human health or environmental effects, which may occur in relation to this cultural heritage assessment.

Receiving Environment

Study Area

12.66 The overall study area extends 1km from the application area in all directions and is shown in **Figure 12-1**.

Baseline Study Methodology

12.67 Research has been undertaken in two phases. The first phase comprised a paper survey of all available archaeological, historical and cartographic sources. The second phase involved a field inspection

Paper Study

12.68 This is a document search. The following sources were examined and a list of sites and areas of archaeological potential compiled:

- Record of Monuments and Places County Offaly;
- The Sites and Monuments Record;
- Available aerial photography;
- Cartographic and written sources relating to the study area;
- Offaly County Development Plan 2021-2027; and
- The National Inventory of Architectural Heritage.

The Record of Monuments and Places

12.69 This was established under section 12 (1) of the 1994 National Monuments (Amendment) Act and provides that the Minister shall establish and maintain a record of monuments and places where the Minister believes there are monuments, such record to be comprised of a list of monuments and relevant places and a map or maps showing each monument and relevant place in respect of each county in the State. The associated files contain information of documentary sources and field inspections where these have taken place. Five Recorded monuments were noted within the study area. All available information on these sites is provided in **Appendix 12-A**.

Cartographic Sources

12.70 This included seventeenth century mapping as well the 1st and 2nd editions of the Ordnance Survey six-inch maps and Documentary sources provide more general historical and archaeological background.

The County Development Plan

12.71 This notes structures listed for preservation.

Field assessment

12.72 A field inspection was carried out on the 19th of September 2025 to determine the location, extent and ascertain the significance of any archaeological sites and to identify any previously unrecorded or suspected sites and potable finds.

Receiving Environment, Historical and Archaeological Landscape

The Landscape

- 12.73 The application site is in the townland of Derryarkin, Co. Offaly, on OS Six Inch sheet No. 3, to the southwest of the R400 regional road and c. 4.6km to the southeast of the town of Rochfortbridge. The proposed application area is 19.5ha in extent. The site is a cut-away bog which was in production until 1985-1990. It was then reclaimed into grassland/farmland without the use of imported soil.

Historical and Archaeological Background

- 12.74 The following is a brief summation of the main types of sites and monuments that are known from the county along with the historical development of the study area. It is intended as a guide to the types of sites and monuments that might be encountered in the study area.
- 12.75 The site is situated in the townland of Derryarkin Co. Offaly, in the civil parish of Croghan and barony of Philipstown Lower.

The Prehistoric Period

- 12.76 Evidence for prehistoric activity in the application area is largely associated with peatland archaeology recorded in Derrygreenagh. A substantial Class 1 togher (OF003-033) constructed of morticed planks, roundwoods and brushwood was identified and dendrochronologically dated to 3643±9 BC or later. This represents an important Neolithic routeway through wetland terrain. A further Class 3 togher (OF003-045) was radiocarbon dated to 1187–830 cal. BC, placing it in the Late Bronze Age. Additional toghers of lighter construction were also recorded, including a Class 2 example (OF003-046) and Class 3 examples (OF003-049, OF003-050). These structures, together with a possible post row (OF003-048), indicate sustained use of the wetland landscape for communication and access during prehistory.
- 12.77 Associated peatland deposits of brushwood and roundwood (OF003-032, OF003-034, OF003-044, OF003-047) may also reflect prehistoric activity. While some of these are insufficiently structured to be accepted as archaeological monuments, several showed evidence of woodworking, including chisel points and toolmarks. Collectively, these sites highlight the prehistoric exploitation of the fen peat landscape at Derrygreenagh for movement, resource extraction and possibly ritual deposition.

The Medieval Period

- 12.78 Evidence for settlement in the Early Medieval period is indicated by two enclosures at Ballyfore (OF003-003, OF003-004). Both were visible as cropmarks on aerial photography but have no surviving surface remains. Their location on relatively flat ground adjacent to marshy areas is typical of dispersed enclosed farmsteads (ringforts), which were the dominant form of settlement between the 6th and 12th centuries AD. These sites suggest that the drier margins of the bog were settled and cultivated during this period.
- 12.79 There is no direct evidence for Anglo-Norman or later medieval occupation in the application area itself, although the broader region was subject to Norman expansion from the 12th century onwards. The survival of the Ballyfore enclosures points to continuity of rural settlement through the medieval period

The Post-Medieval Period

- 12.80 No monuments of post-medieval date are recorded within the application area. By this time, the landscape was increasingly shaped by agricultural improvement and later industrial peat extraction. The absence of post-medieval monuments in the record likely reflects both later land use practices and the limited survival of structures from this period.

Buildings

Designated Structures

- 12.81 The Offaly County Development Plan 2021-27 and the Record of Protected Structures and the National Inventory of Architectural Heritage were examined as part of the baseline study for this section of the EIAR. The review established that there are no buildings listed situated within the application area or the study area.
- 12.82 Fieldwork was carried out on the 19th of September 2025 to identify any additional upstanding non-designated structures in the vicinity of the extraction extension area. This involved assessing all upstanding structures that are marked on the third edition of the six-inch Ordnance Survey mapping either within or within 100m of the application area (see Fig. 12-1). There are no such structures situated in this area.

Archaeology

Archaeological Assessment

Monuments

- 12.83 The Record of Monuments and Places for Co. Offaly and the Sites and Monuments Record were examined as part of the assessment (heritagedata.maps.arcgis.com). Note that in accordance with the Historic and Archaeological Heritage and Miscellaneous Provisions Bill 2023 the RMP will be replaced by the Register of Monuments, but the RMP was still legally in force when this assessment was prepared.
- 12.84 There are no monuments located in the application site. Externally the closest monument is the site of a potential enclosure in Ballyfore townland. This potential monument is located c.0.58km south-west of the application site and will not be impacted.
- 12.85 The remaining monuments in the study area are situated further from the application area than and are considered too far distant to be directly or indirectly impacted by the proposal.

Cartographic Sources

- 12.86 Ordnance Survey 1st and 3rd edition six-inch maps and the first edition 25-inch maps of the area were examined. The analysis did not indicate any previously unrecorded archaeological sites in the application area or vicinity.

Place Name Evidence

- 12.87 The place names were extracted from the cartography in order to facilitate the search for structures and monuments and small finds, to help identify any unrecorded monuments or structures, to search for any published papers and documents related to the study area and to assist in the study of the historical development of the area. The English translations of the townland names of the study presented above below are based on [Logainm.ie](https://logainm.ie). The placenames refer mainly to topographical features, and land cover

- Derryarkin oakwood of the pigs
- Derrygreenagh Oakwood of the blackthorn
- Knockdrin Hill of the conflict
- Derryiron Oakwood of the iron
- Ballybeg Small town
- Ballyfore Town of the spring

RECEIVED: 23/10/2025

National Museum of Ireland

12.88 Examination of the finds registers, and topographical files held by the National Museum of Ireland revealed that three objects have previously been recovered from Derryarkin Bog. These consist of a bronze spearhead (1937:3666), a stone adze-head (1969:863), and a bronze spearhead (P1951:51). In addition to these a chert Bann flake (OF-DYN 0001/92E0148:94) and two possible lithics (OF-DYN 0002a-b) were recovered by the IAWU in 2000 and 2001. A late Bronze Age spearhead (1937:3666) was also found near the togher OF003-002 in Derrycoffey townland.

Archaeological investigations in the study area

- 12.89 There have been several licensed archaeological investigations carried out within the study area (see below).
- 12.90 Derryarkin Bog was archaeologically surveyed in 2002 by the Irish Archaeological Wetland Unit as part of the Archaeological Survey of Ireland Peatland Survey under licence number 02E0942 (IAWU, 2003). A total of 38 sightings, comprising 28 sites, were identified in this bog. These sites have been recorded and surveyed and consist of one primary togher, three secondary toghers, four tertiary toghers, 13 worked wood *in situ* and four unworked wood *in situ*.
- 12.91 Archaeological monitoring was carried out by Archaeological Development Services under licence number 01E1126 (Bennett 2002:1567). Monitoring of peat removal work was carried out in several phases between 2001 and 2004 for a proposed gravel and sand extraction site in the north-eastern extent of Derryarkin Bog. Nothing of archaeological potential was recorded during the course of these works.

Offaly Development Plan 2017-23

12.92 No sites of archaeological importance, National Monuments, or protected structures listed in the Offaly Development Plan 2021-27 are located within the proposed development area.

Aerial Photographs

12.93 Examination of the Ordnance Survey 1995, 1996-2000, 2001-5, 2006-12, 2011-13, and 2013-18 aerial imagery as well as Google earth imagery from 2005, 2006, 2008, 2009, 2014, 2015, 2018, 2019, 2020, 2024 and 2025, did not indicate any additional cultural heritage sites in the application area.

Field Inspection

12.94 A field inspection was carried out on the 19th of September 2025 to identify any previously unknown archaeological or cultural heritage sites in the application area. See **Plate 12-1** for the numbered fieldwork areas.

- 12.95 **Area 1:** This is a roughly L-shaped area of pasture enclosed by ditches and fences. There was no visible indication of any archaeological or cultural heritage material at ground level (see **Plate 12-3**).
- 12.96 **Area 2:** This is a wedge-shaped area of pasture enclosed by ditches and fences. There was no visible indication of any archaeological or cultural heritage material at ground level (see **Plate 12-4**).
- 12.97 **Area 3:** This is a quadrilateral-shaped area of pasture enclosed by ditches and fences. There was no visible indication of any archaeological or cultural heritage material at ground level (see **Plate 12-5**).

Assessment Of Potential Impacts

Direct Effects

- 12.98 There will be no direct effects on any known items of archaeological, architectural or cultural heritage in the application area or the vicinity.

Indirect Effects

- 12.99 There will be no indirect effects on any known items of archaeology, cultural heritage or buildings of heritage interest in the application area or the vicinity.

Interactions with Other Effects

- 12.100 No interaction with other effects has been identified.

Do Nothing Effects

- 12.101 If the proposed development were not to proceed there would be no negative effect on the cultural heritage.

Worst Case Impact

- 12.102 In the worst case previously unknown sub-surface archaeological material could be impacted without preservation by record taking place.

Cumulative Effects

- 12.103 There is no known archaeological, architectural or cultural heritage material present in the application area and the application is not considered to have any cumulative effects.

Recommendations / Proposed Mitigation Measures

Direct Effects

- 12.104 Due to the potential of the survival of previously unknown sub-surface archaeological deposits or finds within the application site and access road, all soil-stripping should be archaeologically monitored under licence from the National Monuments Service.

Indirect Effects

- 12.105 No indirect effects warranting specific mitigation were identified during the course of the cultural heritage assessment and no mitigation is recommended.

RECEIVED: 23/10/2025

References

- Byrne, F.J. 1973.** Irish Kings and High Kings. Dublin.
- DAHGI 1995. Recorded Monuments Protected under Section 12 of the National Monuments (Amendment) Act, 1994. County Offaly
- Eogan, G. 1965.** Catalogue of Irish Bronze Swords. Dublin.
- Eogan, G. 1983.** Hoards of the Irish Later Bronze Age. Dublin.
- Eogan, G. 2000.** The Socketed Bronze Axes in Ireland. Prähistorische Bronzefunde, abteilung IX, band 22.
- EPA 2002.** Guidelines on the information to be contained in Environmental Impact Statements.
- EPA 2003.** Advice Notes on Current Practice (in the preparation of Environmental Impact Statements)
- EPA 2022.** Guidelines on the Information to be contained in Environmental Impact Assessment Reports, published by the Environmental Protection Agency (EPA) in 2022.
- Gwynn, A. and Hadcock, R.N. 1970.** Medieval Religious Houses Ireland. Bristol.
- Harbison, P. 1969.** The axes of the Early Bronze Age in Ireland. Prähistorische Bronzefunde, abteilung IX, band 1.
- Heritage Council 1999.** The role of the Heritage Council in the Planning Process. Kilkenny.
- Kavanagh, R.M. 1991.** "A reconsideration of razors in the Irish earlier Bronze Age". Journal of the Royal Society of Antiquaries 121, 77-104.
- Offaly County Council 2021.** County Development Plan 2021-27.
- MacCotter, P. 2008.** Medieval Ireland. Dublin.
- Mount, C. 1997.** The Early and Middle Bronze Age in south-east Ireland: aspects of social and cultural distributions. Ph.D. thesis presented to the national University of Ireland.
- O'Flaherty, R. 1995.** "An analysis of Irish Early Bronze Hoards containing copper or bronze objects." Journal of the Royal Society of Antiquaries 125, 10-45.
- O'Riordain, B and Waddell J. 1993.** The Funerary Bowls and vases of the Irish Bronze Age. Galway.
- Orpen 1911-20.** Ireland under the Normans. 4 Vols. Oxford.
- Otway-Ruthven, A.J. 1980.** A History of Medieval Ireland. London.
- Raftery, B. 1984.** La Tène in Ireland. Marburg.
- Simpson, D.D.A. 1990.** "The Stone Battle Axes of Ireland." Journal of the Royal Society of Antiquaries 120, 5-40.
- Waddell, J. 1990.** The Bronze Age burials of Ireland. Galway
- Waddell, J. 1998.** The Prehistoric Archaeology of Ireland. Galway.

RECEIVED: 23/10/2025

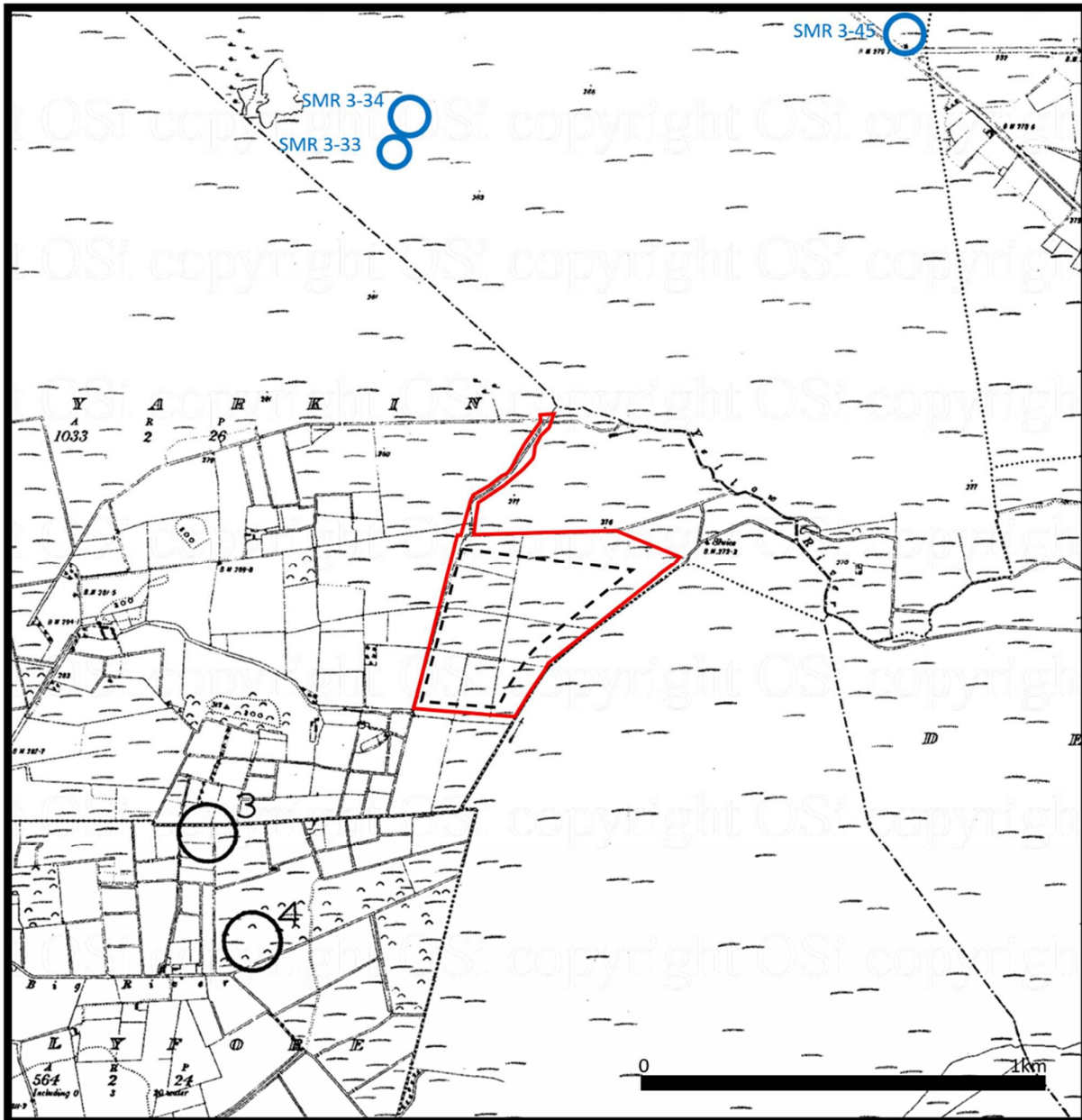
Figures

RECEIVED: 23/10/2025

Figure 12-1: The Study Area

The study area indicated on the RMP map sheets for Co. Offaly No. 3.

The application area is indicated with the **red line**. RMP sites are indicated with **black circles**, and the SMRs with **blue circles**.



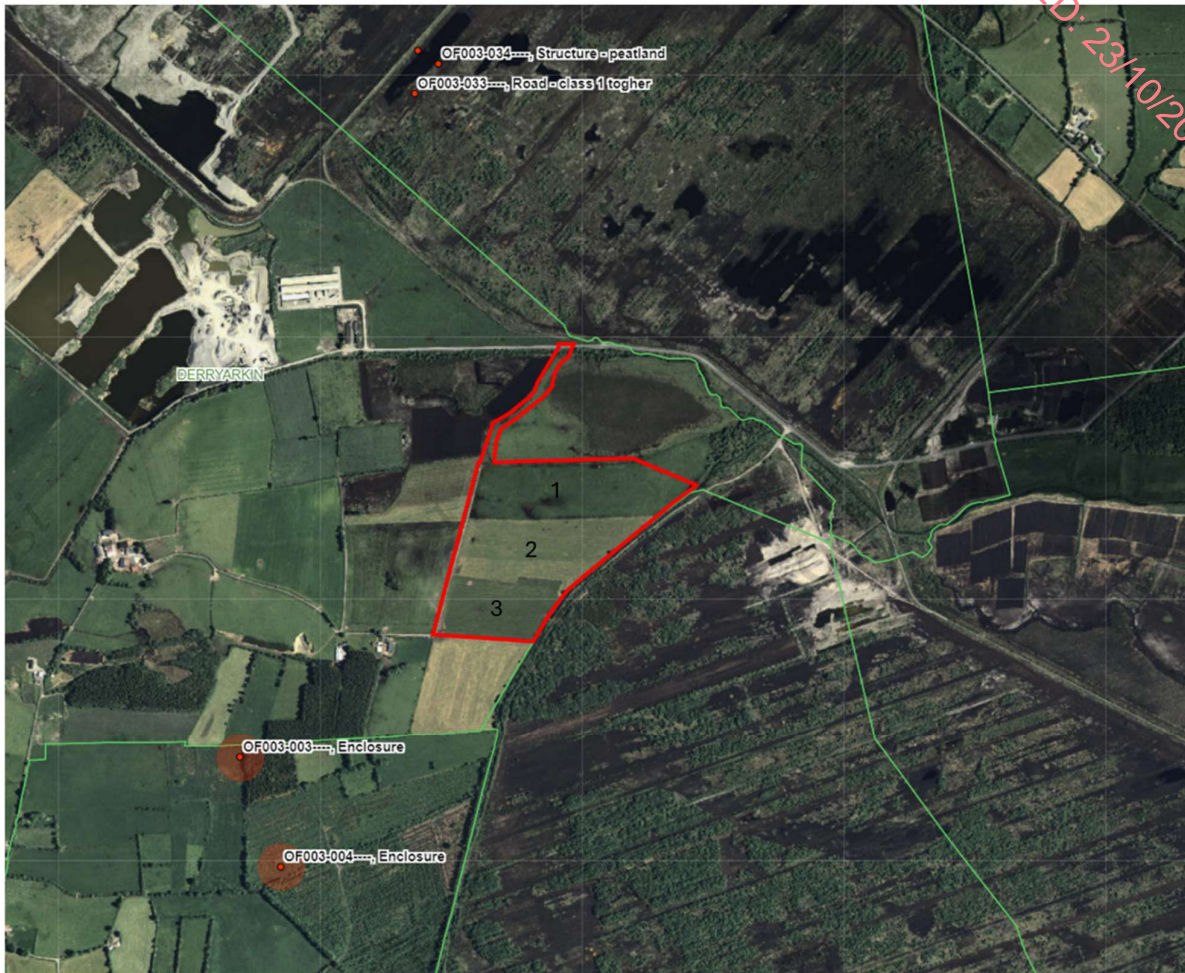
RECEIVED: 23/10/2025

RECEIVED: 23/10/2025

Plates

RECEIVED: 23/10/2025

Plate 12-1: Aerial image of the application area taken



RECEIVED 23/10/2025

Plate 12-2: Drone view of the application area looking north.



Plate 12-3: Drone view of Area 1 looking east.



RECEIVED 23/10/2025

Plate 12-4: Drone view of Area 2 looking east.



Plate 12-5: Drone view of Area 3 looking north.



RECEIVED: 23/10/2025

Appendix 12-A Sites in the Record of Monuments and Places and the Sites and Monuments Record

RMP/SMR No	Townland	Monument Class	Description
OF003-003----	BALLYFORE	Enclosure	This site was located on flat land which bordered marshy land. The site has good views in all directions. There was no surface evidence of the site in the area marked on the OS 6-inch map. The site however showed up as a cropmark on the GSI aerial photographs of the area (GSI N 586/7; 486/5).
OF003-004----	BALLYFORE	Enclosure	Situated on flat marshy land in close proximity to archaeological site (OF003-003----). There was no surface remains of this area marked on the OS 6-inch map. The site however showed up as a cropmark on the aerial photographs taken in 1973 of the area (GSI N 486/5).
OF003-032----	DERRYGREE NAGH	Structure - peatland	A single roundwood and two fragmentary pieces of brushwood on the field surface (L 3.25m min.; Wth 0.65m; D 0.075m). A bulldozer machine has extensively damaged this site. The brushwood (diam. 0.015-0.03m) survives as fragments and bark. A very fragile, possible stone toolmark survives at one end of the roundwood. The site lies in well-humified fen peat with Phragmites and woody roots. Recorded by the Irish Archaeological Wetland Unit (University College, Dublin) in 2002. The evidence is not sufficient to warrant its acceptance as the remains of an archaeological monument.
OF003-033----	DERRYGREE NAGH	Road - class 1 togher	The site (L 68.5m; Wth 2.95m; D 0.26m) is orientated N-S and is constructed of morticed planks, roundwoods and brushwood. It varies in surviving width (Wth 2.7-3.25m) and depth (D 0.08-0.26m) along its length. At the N extent, it is constructed of two layers with a basal layer of predominantly longitudinal brushwood with some transverses and fragments of split timbers. Above this is a morticed plank, secured by a peg. The upper surface is formed of longitudinal planks (Wth 0.06-0.22m; D 0.01-0.048m), roundwoods (diam. 0.065-0.09m) and brushwood. The larger elements are concentrated on the W side of the site and a deposit of lighter brushwood elements is present at the E extent. Three pegs (diam. 0.055m) are set at 75-90° angles securing the larger elements in place. Woodworking is evidenced by the seven, very thin, radially split planks, by stone toolmarks on the end of one of the pegs and by the

			D-shaped mortice. This portion of the site is in moderately humified fen peat with Sphagnum and a very high proportion of unidentified reeds. Beyond this, to the S, there is no discernable structure evident, although there is brushwood on the field surface, along the line of the site. The S extent consists of a transverse plank, brushwood, roundwoods and some possible pegs. A chert scraper (02E0942:2) was recovered from the field surface 1.4m to the N of this sighting. This site was dendrochronologically dated to 3643±9 BC or later (Q10345).
OF003-034----	DERRYGREE NAGH	Structure - peatland	A regular deposit (L 2.55m min.; Wth 1.04m; D 0.06m) of densely packed brushwood and twigs on the field surface. The elements (diam. 0.012-0.036m) are predominantly orientated N-S, one to two pieces deep. Twigs are dispersed throughout the deposit, which is in well-humified fen peat with Sphagnum and unidentified reeds. Recorded by the Irish Archaeological Wetland Unit (University College, Dublin) in 2002. The evidence is not sufficient to warrant its acceptance as the remains of an archaeological monument.
OF003-044----	DERRYGREE NAGH	Structure - peatland	An irregular deposit of mixed brushwood and light roundwoods on the field surface (L 2.34m; Wth 0.9m; D 0.05m). The site had no clear structure and the wood was degraded and fragmentary. There was a large amount of ex situ material in the vicinity. Woodworking was evidenced by a degraded pencil point and two chisel points. This site lay in moderately humified Sphagnum peat with a high amount of Eriophorum and some ericaceous remains. Recorded by the Irish Archaeological Wetland Unit (University College, Dublin) in 2002. The evidence is not sufficient to warrant its acceptance as the remains of an archaeological monument.
OF003-045----	DERRYGREE NAGH	Road - class 3 togher	The site (L 8.7m min.; Wth 2.1m; D 0.07m) is orientated ENE-WSW and consists of light brushwood overlain by roundwoods. The majority of the elements are transversely and densely laid. Three pieces of brushwood appear to be longitudinally laid but this may be due to disturbance. The wood is in poor condition due to exposure and two chisel points are present. It lies in moderately humified Sphagnum

			peat with occasional Eriophorum. Radiocarbon dated to 1187-830 cal. BC (Wk-11723).
OF003-046----	DERRYGREE NAGH	Road - class 2 togther	The site (L 15.96m; Wth 1.33m; D 0.06m min.) is orientated NE-SW and is composed of light brushwood, a small twig bed and occasional twigs. The elements are well spaced and very irregularly laid, probably partially due to disturbance. The wood is in moderate condition with woodworking evidenced by a chisel point. At a second location, the site is more substantial and consists of heavy brushwood which is transversely laid but well spaced. This site lies in moderately humified Sphagnum peat with Eriophorum.
OF003-047----	DERRYGREE NAGH	Structure - peatland	A deposit of brushwood, roundwoods and twigs on the field surface (L 5m; Wth 0.78m; D 0.05m). The site appears to run NE-SW but the brushwood (diam. 0.02-0.03m) and roundwoods (diam. 0.06-0.08m) are fragmentary and irregularly laid with no clear structure. The elements are highly degraded and there is a large amount of ex situ material in the area. This site lies in moderately humified Sphagnum peat with a high amount of Eriophorum and some ericaceous remains. Recorded by the Irish Archaeological Wetland Unit (University College, Dublin) in 2002. The evidence is not sufficient to warrant its acceptance as the remains of an archaeological monument.
OF003-048----	DERRYGREE NAGH	Post row - peatland	The site (L 7.25m; Wth 2m; D 0.46m) is orientated NW-SE and consists of three stakes (diam. 0.05-0.06m) which are set at 45° angles. Two of the stakes are 0.02m apart, the third lies 7.25m NW of these. The condition of the wood ranges from poor to good with a well-preserved wedge point present on one element.
OF003-049----	DERRYGREE NAGH	Road - class 3 togther	The site (L 12.9m min.; Wth 3.3m; D 0.1m min.) is orientated N-S and consists of mixed brushwood, roundwoods, twig beds, pegs and a single post. The brushwood is irregularly deposited, up to four pieces deep, amongst which lie three longitudinal roundwoods. Four pegs (diam. 0.02-0.05m), two at each edge of the site, are set at 20-90° angles. There is a vertical post (diam. 0.08m) in the centre of the site. Woodworking is evidenced by two metal-cut chisel points. This site lies in moderately humified Sphagnum peat with Eriophorum and Calluna.

OF003-050----	DERRYGREE NAGH	Road - class 3 togther	<p>The site (L 4.1m min.; Wth 1.14m min.; D 0.13m min.) is orientated WNW-ESE and is constructed of five roundwoods, which are closely and longitudinally laid. At the NE extent of the site is a single transverse roundwood. Scattered throughout are occasional irregularly laid, light brushwood and twigs. The elements are in good condition with a metal cut pencil point present. The main body of the site lies in moderately humified Sphagnum peat with a high amount of Eriophorum and some Calluna. Overlying this material are two roundwoods orientated NE-SW. One is extremely decayed, the other has intact bark and is similar to a tree trunk.</p>
OF003-003----	BALLYFORE	Enclosure	<p>This site was located on flat land which bordered marshy land. The site has good views in all directions. There was no surface evidence of the site in the area marked on the OS 6-inch map. The site however showed up as a cropmark on the GSI aerial photographs of the area (GSI N 586/7; 486/5).</p>

RECEIVED: 23/10/2025